

# Sight-Singing Melodies from AP Exams

1996-1

*Moderato*

*f*

Musical notation for 1996-1: A single staff in treble clef with a key signature of one flat (Bb) and a time signature of 2/4. The melody starts on a half note G4, followed by quarter notes A4, Bb4, and C5. A slur covers the next six notes: quarter notes D5, E5, F5, G5, A5, and Bb5. The piece ends with a quarter note C5 and a final double bar line.

1996-2

*Moderato*

*f*

Musical notation for 1996-2: A single staff in bass clef with a key signature of two sharps (F# and C#) and a time signature of 6/8. The melody starts on a half note G2, followed by quarter notes A2, B2, and C3. A slur covers the next six notes: quarter notes D3, E3, F3, G3, A3, and B3. The piece ends with a quarter note C3 and a final double bar line.

1997-1

*Moderato*

*f*

Musical notation for 1997-1: A single staff in bass clef with a key signature of two sharps (F# and C#) and a common time signature (C). The melody starts on a half note G2, followed by quarter notes A2, B2, and C3. A slur covers the next six notes: quarter notes D3, E3, F3, G3, A3, and B3. The piece ends with a quarter note C3 and a final double bar line.

1997-2

*Moderato*

*f*

Musical notation for 1997-2: A single staff in treble clef with a key signature of one sharp (F#) and a time signature of 6/8. The melody starts on a half note G4, followed by quarter notes A4, B4, and C5. A slur covers the next six notes: quarter notes D5, E5, F5, G5, A5, and B5. The piece ends with a quarter note C5 and a final double bar line.

1998-1

*Andante*

*f*

1998-2

*Moderato*

*f*

1999-1

*Moderato*

*f*

1999-2

*Moderato*

*f*

2000-1 (Bb 2 bass clef is played)

*Andante*

*f*

2000-2

*Andante*

*f*

2001-1

*Andante grazioso*

*f*

2001-2

*Andante grazioso*

*f*

2002-1 (F4 treble clef is played)

*Moderato*

*f*

2002-2

*Moderato*



*f*

Musical notation for 2002-2: Treble clef, key signature of two sharps (F# and C#), 6/8 time signature. The piece is marked *Moderato* and *f*. The melody consists of two phrases, each spanning four measures and connected by a slur. The first phrase starts on G4 and moves stepwise up to D5. The second phrase starts on G4 and moves stepwise down to G3.

2003-1

*Moderato*

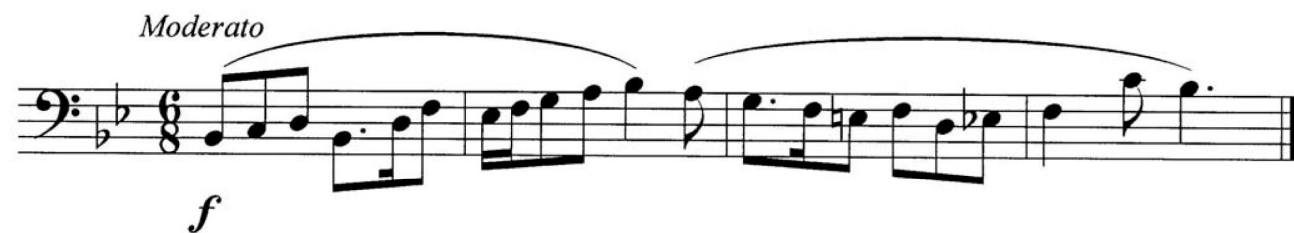


*f*

Musical notation for 2003-1: Treble clef, key signature of one sharp (F#), common time signature. The piece is marked *Moderato* and *f*. The melody consists of two phrases, each spanning four measures and connected by a slur. The first phrase starts on G4 and moves stepwise up to D5. The second phrase starts on G4 and moves stepwise down to G3.

2003-2

*Moderato*

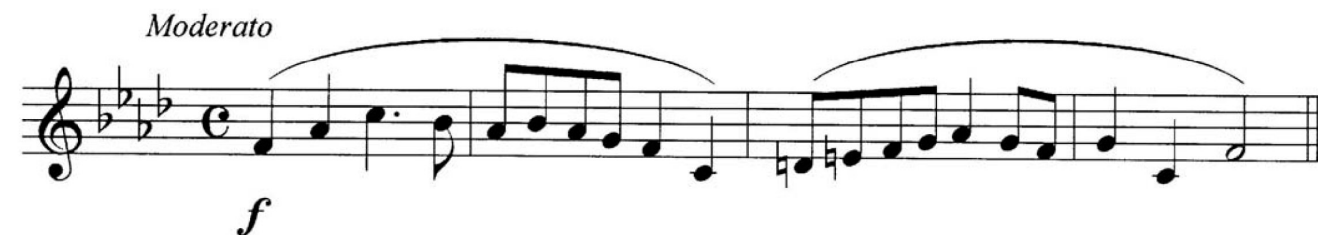


*f*

Musical notation for 2003-2: Bass clef, key signature of two flats (Bb and Eb), 6/8 time signature. The piece is marked *Moderato* and *f*. The melody consists of two phrases, each spanning four measures and connected by a slur. The first phrase starts on G2 and moves stepwise up to D3. The second phrase starts on G2 and moves stepwise down to G1.

2004-1

*Moderato*



*f*

Musical notation for 2004-1: Treble clef, key signature of three flats (Bb, Eb, and Ab), common time signature. The piece is marked *Moderato* and *f*. The melody consists of two phrases, each spanning four measures and connected by a slur. The first phrase starts on G4 and moves stepwise up to D5. The second phrase starts on G4 and moves stepwise down to G3.

2004-2

*Moderato*



*f*

Musical notation for 2004-2: Bass clef, key signature of two sharps (F# and C#), 6/8 time signature. The piece is marked *Moderato* and *f*. The melody consists of two phrases, each spanning four measures and connected by a slur. The first phrase starts on G2 and moves stepwise up to D3. The second phrase starts on G2 and moves stepwise down to G1.

2005 -1

*Moderato*

*f*

Musical notation for 2005 -1: Bass clef, common time (C), key signature of one flat (B-flat). The piece is marked *Moderato* and *f*. The melody consists of two phrases, each under a slur. The first phrase starts with a quarter note G2, followed by eighth notes F2, E2, D2, C2, B1, A1, G1. The second phrase starts with a quarter note G1, followed by eighth notes F1, E1, D1, C1, B0, A0, G0.

2005 -2

*Moderato*

*f*

Musical notation for 2005 -2: Treble clef, 6/8 time, key signature of one sharp (F-sharp). The piece is marked *Moderato* and *f*. The melody consists of two phrases, each under a slur. The first phrase starts with a quarter note F#4, followed by eighth notes E4, D4, C4, B3, A3, G3. The second phrase starts with a quarter note G3, followed by eighth notes F#3, E3, D3, C3, B2, A2, G2.

2006 -1

*Moderato*

Musical notation for 2006 -1: Treble clef, common time (C), key signature of one flat (B-flat). The piece is marked *Moderato*. The melody consists of two phrases, each under a slur. The first phrase starts with a quarter note G2, followed by eighth notes F2, E2, D2, C2, B1, A1, G1. The second phrase starts with a quarter note G1, followed by eighth notes F1, E1, D1, C1, B0, A0, G0.

2006 -2

*Moderato*

Musical notation for 2006 -2: Bass clef, 6/8 time, key signature of one flat (B-flat). The piece is marked *Moderato*. The melody consists of two phrases, each under a slur. The first phrase starts with a quarter note G2, followed by eighth notes F2, E2, D2, C2, B1, A1, G1. The second phrase starts with a quarter note G1, followed by eighth notes F1, E1, D1, C1, B0, A0, G0.

2007-1

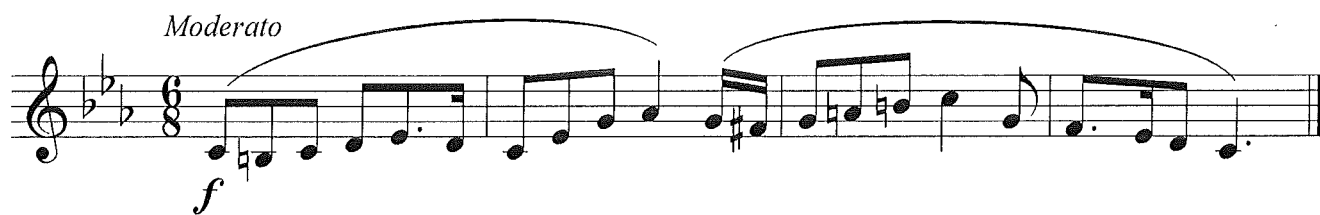
*Moderato*

*f*

Musical notation for 2007-1: Bass clef, common time (C), key signature of two sharps (F-sharp, C-sharp). The piece is marked *Moderato* and *f*. The melody consists of two phrases, each under a slur. The first phrase starts with a quarter note G2, followed by eighth notes F#2, E#2, D#2, C#2, B2, A2, G2. The second phrase starts with a quarter note G2, followed by eighth notes F#2, E#2, D#2, C#2, B2, A2, G2.

2007-2

*Moderato*

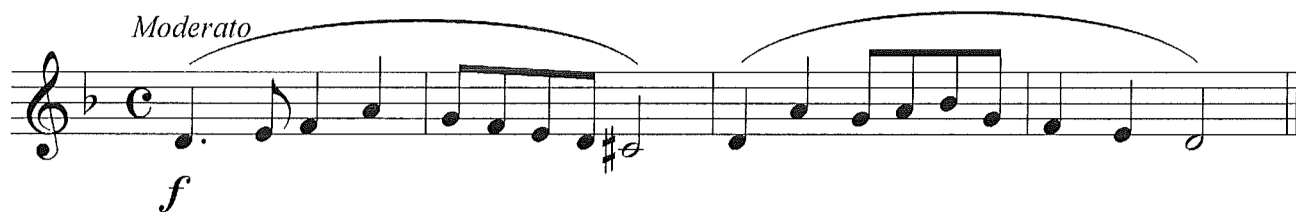


*f*

Musical notation for 2007-2: Treble clef, key signature of three flats (B-flat, E-flat, A-flat), 8/8 time signature. The piece is marked *Moderato* and *f*. The melody consists of two phrases, each under a slur. The first phrase starts with a quarter note G4, followed by eighth notes A4, B-flat4, C5, D5, E5, F5, G5. The second phrase starts with a quarter note G5, followed by eighth notes F5, E5, D5, C5, B-flat4, A4, G4.

2008-1

*Moderato*



*f*

Musical notation for 2008-1: Treble clef, key signature of two flats (B-flat, E-flat), common time (C). The piece is marked *Moderato* and *f*. The melody consists of two phrases, each under a slur. The first phrase starts with a quarter note G3, followed by quarter notes A3, B3, C4, D4, E4, F4, G4. The second phrase starts with a quarter note G4, followed by quarter notes F4, E4, D4, C4, B3, A3, G3.

2008-2

*Moderato*

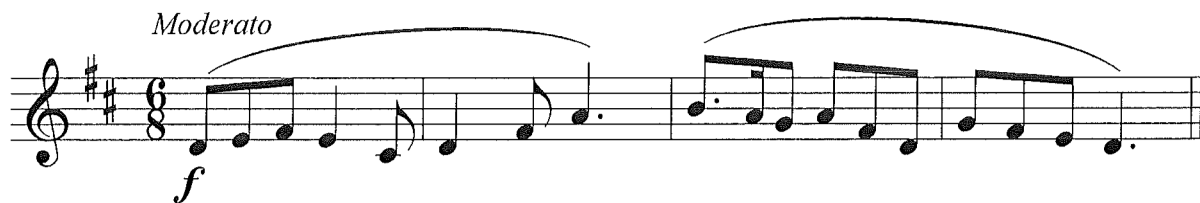


*f*

Musical notation for 2008-2: Bass clef, key signature of three flats (B-flat, E-flat, A-flat), 8/8 time signature. The piece is marked *Moderato* and *f*. The melody consists of two phrases, each under a slur. The first phrase starts with a quarter note G2, followed by eighth notes A2, B-flat2, C3, D3, E3, F3, G3. The second phrase starts with a quarter note G3, followed by eighth notes F3, E3, D3, C3, B-flat2, A2, G2.

2009-1

*Moderato*

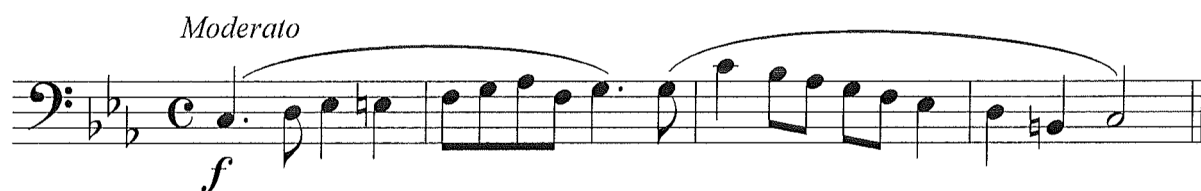


*f*

Musical notation for 2009-1: Treble clef, key signature of two sharps (F-sharp, C-sharp), 8/8 time signature. The piece is marked *Moderato* and *f*. The melody consists of two phrases, each under a slur. The first phrase starts with a quarter note G4, followed by eighth notes A4, B4, C5, D5, E5, F5, G5. The second phrase starts with a quarter note G5, followed by eighth notes F5, E5, D5, C5, B4, A4, G4.

2009-2

*Moderato*




*f*

Musical notation for 2009-2: Bass clef, key signature of two flats (B-flat, E-flat), common time (C). The piece is marked *Moderato* and *f*. The melody consists of two phrases, each under a slur. The first phrase starts with a quarter note G3, followed by quarter notes A3, B3, C4, D4, E4, F4, G4. The second phrase starts with a quarter note G4, followed by quarter notes F4, E4, D4, C4, B3, A3, G3.

2010-1

*Moderato*

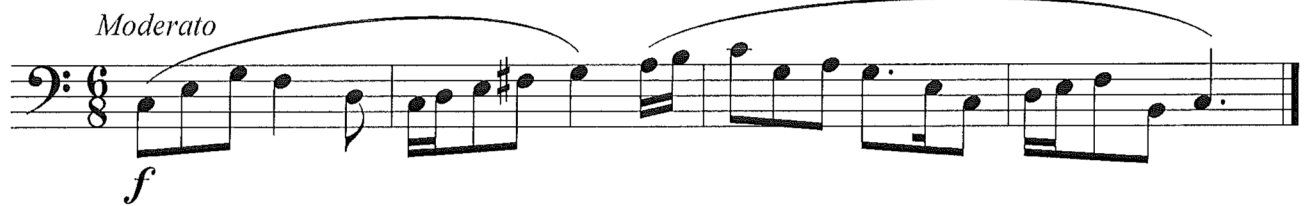


*f*

Musical notation for 2010-1: Treble clef, key signature of one sharp (F#), 3/4 time signature. The piece is marked *Moderato* and *f*. The melody consists of a series of eighth and quarter notes, with a fermata over the final two notes.

2010-2

*Moderato*

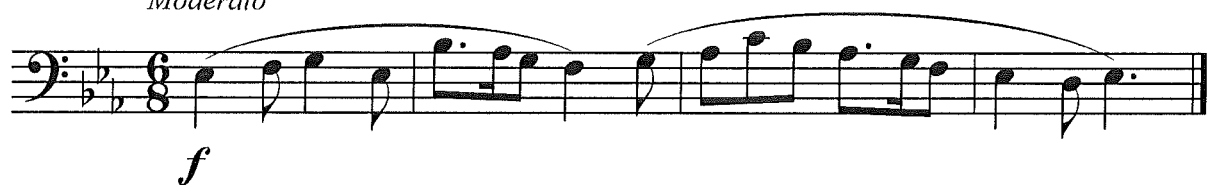


*f*

Musical notation for 2010-2: Bass clef, key signature of one sharp (F#), 6/8 time signature. The piece is marked *Moderato* and *f*. The melody consists of eighth and quarter notes, with a fermata over the final two notes.

2011-1

*Moderato*

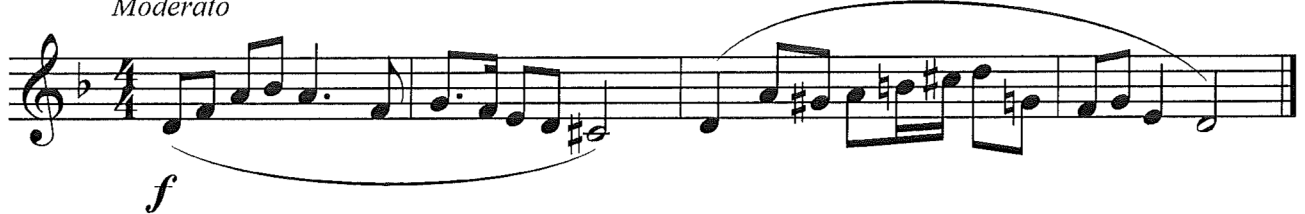


*f*

Musical notation for 2011-1: Bass clef, key signature of two flats (Bb, Eb), 6/8 time signature. The piece is marked *Moderato* and *f*. The melody consists of eighth and quarter notes, with a fermata over the final two notes.

2011-2

*Moderato*



*f*

Musical notation for 2011-2: Treble clef, key signature of one flat (Bb), 4/4 time signature. The piece is marked *Moderato* and *f*. The melody consists of quarter and eighth notes, with a fermata over the final two notes.

2012-1

*Moderato*



*f*

Musical notation for 2012-1: Bass clef, key signature of one sharp (F#), common time (C). The piece is marked *Moderato* and *f*. The melody consists of quarter and eighth notes, with a fermata over the final two notes.

2012-2

*Moderato*



*f*

Musical notation for 2012-2: Treble clef, key signature of two flats (B-flat, E-flat), 6/8 time signature. The piece is marked *Moderato* and *f* (forte). The melody consists of eighth and quarter notes, with two phrases connected by a slur.

2013-1

*Moderato*



*f*

Musical notation for 2013-1: Treble clef, key signature of one sharp (F-sharp), 6/8 time signature. The piece is marked *Moderato* and *f* (forte). The melody consists of eighth and quarter notes, with two phrases connected by a slur.

2013-2

*Moderato*

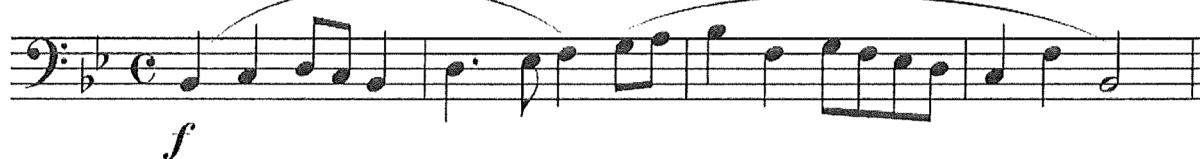


*f*

Musical notation for 2013-2: Bass clef, key signature of two flats (B-flat, E-flat), common time signature. The piece is marked *Moderato* and *f* (forte). The melody consists of quarter and eighth notes, with two phrases connected by a slur.

2014-1

*Moderato*



*f*

Musical notation for 2014-1: Bass clef, key signature of two flats (B-flat, E-flat), common time signature. The piece is marked *Moderato* and *f* (forte). The melody consists of quarter and eighth notes, with two phrases connected by a slur.

2014-2

*Moderato*



*f*

Musical notation for 2014-2: Treble clef, key signature of two flats (B-flat, E-flat), 6/8 time signature. The piece is marked *Moderato* and *f* (forte). The melody consists of eighth and quarter notes, with two phrases connected by a slur.



2015-1

*Moderato*



*f*

Musical notation for 2015-1: Bass clef, common time (C), key signature of one flat (B-flat). The piece is marked *Moderato* and *f*. The melody consists of two phrases, each under a slur. The first phrase starts on G2 and moves up to B-flat2, then down to G2. The second phrase starts on G2 and moves up to B-flat2, then down to G2.

2015-2

*Moderato*



*f*

Musical notation for 2015-2: Treble clef, 6/8 time, key signature of three sharps (F#, C#, G#). The piece is marked *Moderato* and *f*. The melody consists of two phrases, each under a slur. The first phrase starts on G4 and moves up to B4, then down to G4. The second phrase starts on G4 and moves up to B4, then down to G4.

2016-1

**Moderato**




*f*

Musical notation for 2016-1: Bass clef, common time (C), key signature of two sharps (F#, C#). The piece is marked **Moderato** and *f*. The melody consists of two phrases, each under a slur. The first phrase starts on G2 and moves up to B2, then down to G2. The second phrase starts on G2 and moves up to B2, then down to G2.

2016-2

**Moderato**

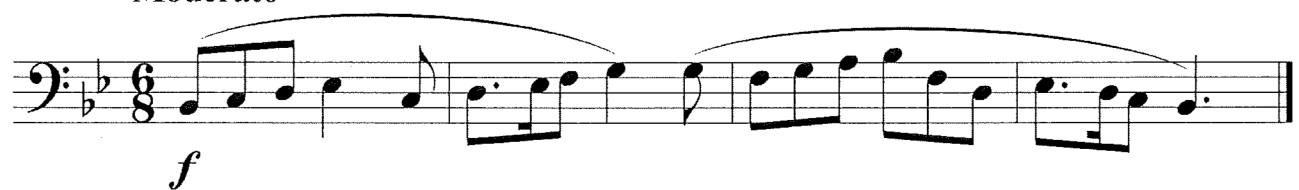


*f*

Musical notation for 2016-2: Treble clef, 6/8 time, key signature of three flats (B-flat, E-flat, A-flat). The piece is marked **Moderato** and *f*. The melody consists of two phrases, each under a slur. The first phrase starts on G4 and moves up to B4, then down to G4. The second phrase starts on G4 and moves up to B4, then down to G4.

2017-1

**Moderato**



*f*

Musical notation for 2017-1: Bass clef, 6/8 time, key signature of one flat (B-flat). The piece is marked **Moderato** and *f*. The melody consists of two phrases, each under a slur. The first phrase starts on G2 and moves up to B2, then down to G2. The second phrase starts on G2 and moves up to B2, then down to G2.

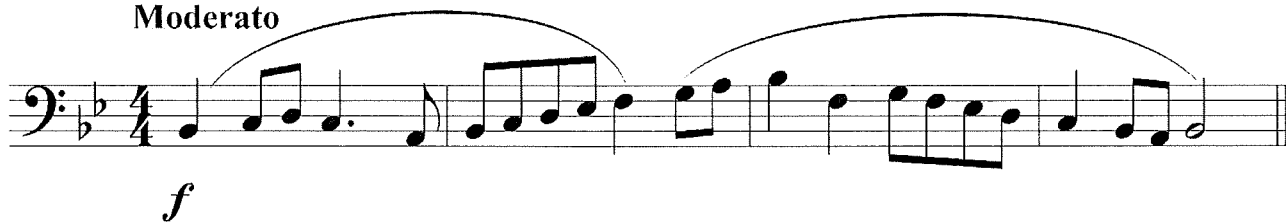
2017-2

Moderato



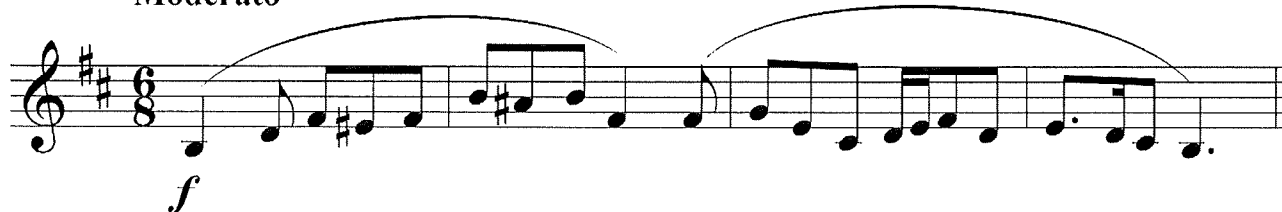
2018-1

Moderato



2018-2

Moderato



2019-1

2019-2